



# Viking Sink Company LLC

653 TOWER DR - CADOTT, WI 54727  
715-289-3540 - FAX 715-289-3542

# CUSTOM SHOWER ORDER FORM "D"

FOR VSC OFFICE USE ONLY	
ORDER #	_____
SOC:	_____ -ROUTE_____
SCD:	_____

CUSTOMER: \_\_\_\_\_ PO # \_\_\_\_\_

ADDRESS: \_\_\_\_\_ DATE: \_\_\_\_\_ PHONE: \_\_\_\_\_

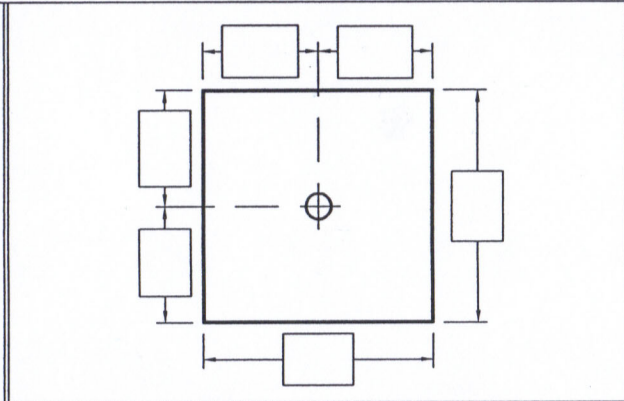
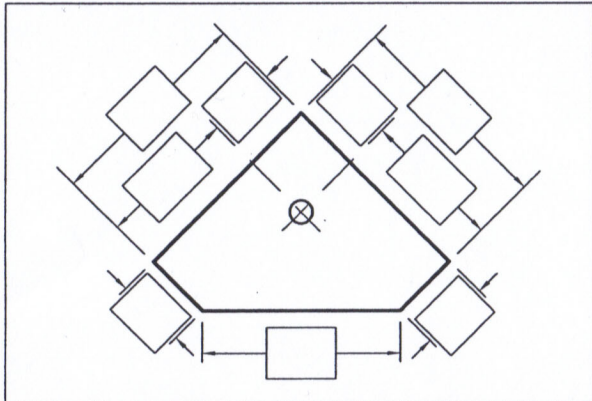
ORDERED BY: \_\_\_\_\_ FAX: \_\_\_\_\_

## BATHROOM ACCESSORIES

- SHOWER SEAT
- RECESSED DOUBLE SHAMPOO HOLDER
- RECESSED SINGLE SHAMPOO HOLDER
- SM. CORNER SHAMPOO HOLDER (2-SHELF)
- LG. CORNER SHAMPOO HOLDER (3-SHELF)
- CORNER SOAP DISH
- TOILET PAPER HOLDER (WALL MOUNT)
- TOILET PAPER HOLDER (RECESSED MOUNT)
- TUMBLER/TOOTHBRUSH COMBO
- TOWEL BAR W/ CLEAR ACRYLIC ROD
- TOWEL RING BRASS
- TOWEL RING CHROME
- INSIDE CORNER TRIM 9 FT. LONG
- OUTSIDE CORNER TRIM
- BATTEN STRIP

SPECIAL INSTRUCTIONS \_\_\_\_\_

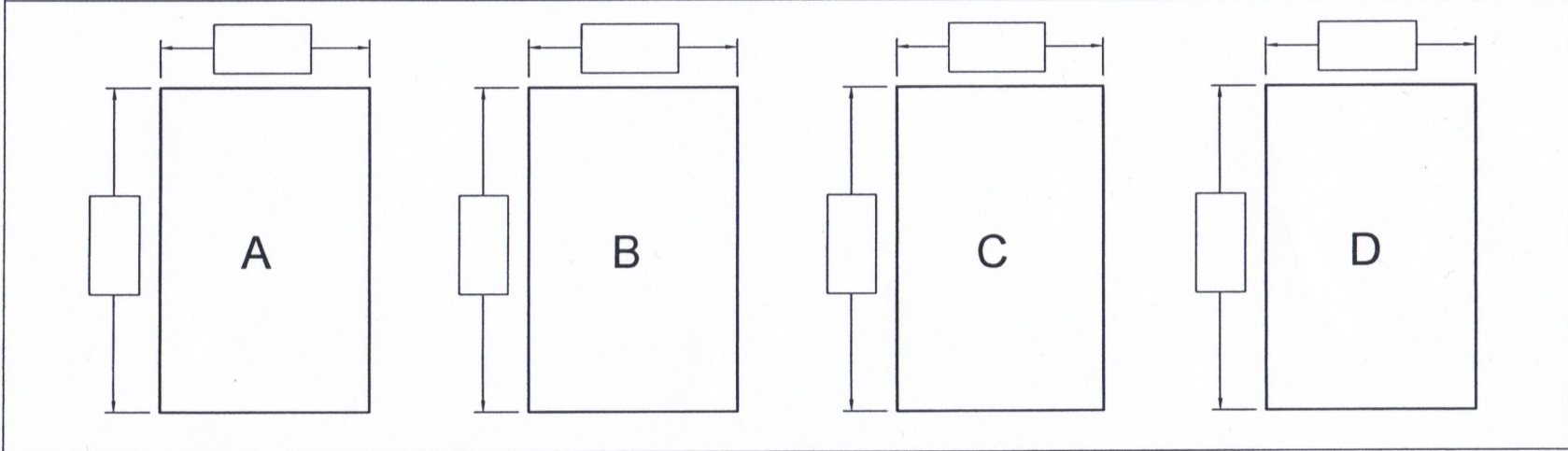
**BASE ONLY -OR-  KIT** (BASE, WALLS & INSIDE CORNER TRIM) **BASE COLOR:** \_\_\_\_\_ **WALL COLOR:** \_\_\_\_\_



- INDICATE THRESHOLD LOCATION & LENGTH.

THRESHOLD PARTS ARE SHIPPED AS SEPARATE PIECES & ASSEMBLED AT THE JOB SITE.

FLOOR MEASUREMENTS MUST BE ROUGH OPENING. (STUD TO STUD)



- INDICATE:  
(F) FINISHED EDGE  
(NF) NON FINISHED EDGE

I AGREE AND ACCEPT THE SPECIFICATIONS FOR THE SHOWER AS SHOWN.

DATE: \_\_\_\_\_ SIGNATURE: \_\_\_\_\_